



BELLOXI
SULPHUR LLP



Love To Serve



www.belloxisulphur.com



SULPHUR - THE FOURTH MAJOR PLANT NUTRIENT

Nitrogen (N), Phosphorus (P) and Potassium (K) are critical components of a well-fertilized crop. But to Achieve Yields and More Nutritious foods, crops need Sulphur (S). Sulphur is essential for the growth and development of all crops, without exception.

Sulphur is having below mentioned key functions in plants.

- Formation of chlorophyll that permits photosynthesis through which plants produce starch, sugars, oils, fats, vitamins and other compounds.
- Protein production : Sulphur is a constituent of three s - containing amino acids (cysteine, cystine and methionine), which are the building blocks of protein. About 90% of plant is present in these amino acids.
- Synthesis of oils : This is why adequate sulphur is so crucial for oilseeds.
- Activation of enzymes : Which aid in biochemical reactions in the plant.
- Increases crop yields and improves produce quality : Both of which determine the market price a farmer would get for his produce.
- With reference to crop quality, S improves protein and oil percentage in seeds, cereal quality for milling and baking, marketability of dry coconut kernel (copra), quality of tobacco, nutritive value of forages etc.
- It is associated with special metabolisms in plant and the structural characteristics of protoplasm. So, Sulphur is an important plant nutrient necessary to produce bountiful food, crops grains, fruits and vegetables and pasture crops all need sulphur to sustain growth. visual cues and soil tests can be wild to identify potential sulphur deficiencies.

- Belloxi Sulphur LLP manufactures

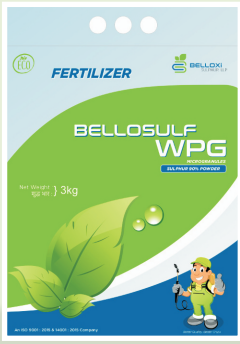
| | |
|---------------------------|--------------------------------------|
| Bellosulf - WPG | (Sulphur 90% Powder), |
| Bellosulf-Zn | (S 67%+Zn 14%), |
| Bellosulf - 80 WDG | (Sulphur 80% WDG), |
| Bellosulf - DF | (Tebuconazole 10% + Sulphur 65% WG), |
| Bellosulf - 80 WP | (Sulphur 80% WP), |
| Bellosulf-DP | (Sulphur 85 % DP), |
| Bellosulf-BS | (Bentonite Sulphur) |

Liquid Sulphur Like

| | |
|-----------------------|---------------------|
| Bellosulf - LS | (Sulphur 55.16%SC), |
| Bellosulf-LS | (Sulphur 40%SC). |



Our Product



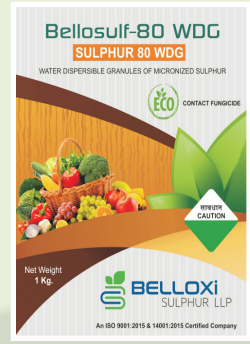
Bellosulf - WPG

(Sulphur 90% Powder)
Fertilizer



Bellosulf - Zn

(S-67% + Zn-14%)
Fertilizer



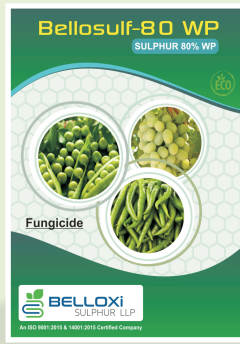
Bellosulf - WDG

(Sulphur 80% WDG)
Contact Fungicide



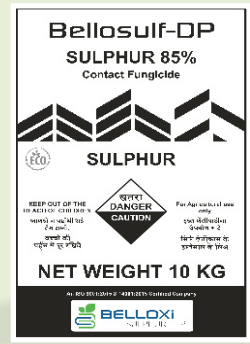
Bellosulf - DF

(Tebuconazole 10% + Sulphur 65 % WG)
Systemic & Contact Fungicide



Bellosulf - 80WP

(Sulphur 80% WP)
Fungicide



Bellosulf - 85DP

(Sulphur 85% DP)
Contact Fungicide



Bellosulf - BS

(Sulphur Bentonite)
Fertilizer



Bellosulf - LS

(Sulphur 40% SC)
Fungicide cum Miticide



Bellosulf - LS

(Sulphur 55.16% SC)
Contact Fungicide



**IT'S MORE THEN
A JOB, IT'S A WAY OF LIFE !**



Our Company

Belloxi Sulphur LLP is driven by the leadership of visionary entrepreneurs. The cornerstone of the BSL has been laid by highly experienced founders who are passionate about driving a different segment in agricultural industry. The cornerstone of BSL has been laid with the incessant pursuit of the founders to bring a revolutionary change in the agriculture league by infusing innovation. BSL believes in fast sustainable growth based on a strong foundation values and ethics ; striving for continual improvement for providing value added solutions to the end customers. Therefore in a short span of time, we are able to win over trust of stake holders globally and has become one of the most successful and reputed sulphur related manufacturing agro chemical industry.

State of Art Production Facilities

Steer leaders of BSL Believe in setting long - term business goals rather than settling down simply with a myopic approach. Aiming to achieve greater milestones and emerge as one of the pioneering sulphur based agro chemicals manufacturers, we have always put emphasis on innovation.

We have advanced production facilities that allow us to deliver responsible growth to our customers. But that's not it. We have a dedicated R & D center to keep constantly evolving by infusing further innovation in our development processes.



At Derala, Near Derala chokdi,
Naranka - Derala Road, Maliya, Morbi - 363660 (Gujarat)
✉ sales@belloxisulphur.com